

Spirit of Charity legacy continues

Located in the heart of New Orleans, University Medical Center New Orleans' roots run deep, all the way back to the early days of the city we serve. University Medical Center carries the torch of Charity Hospital through an unwavering commitment to making exceptional care accessible to everyone who needs it.

The spirit of Charity is alive at University Medical Center, as we educate future generations of healthcare professionals and facilitate innovation through groundbreaking research, ensuring extraordinary care will be provided right here at the center of New Orleans, today and tomorrow.



Tom Patrias
 President & Chief Executive Officer
 University Medical Center
 New Orleans

“University Medical Center was built for, and by, New Orleans, with values deeply rooted in community, compassion, and exceptional care for all. Inspired by the enduring Spirit of Charity, we are here to serve our region during its most vulnerable moments. Our commitment remains the same—to deliver compassionate care and create a healthier future for every person we have the privilege of serving.”

Specialties





- Allergy and Skin Care
- Behavioral Health
- Brain and Spine Care
- Burn Center
- Cancer Care
- Digestive Care
- Ear, Nose, and Throat Care
- Emergency Care
- General Surgery
- Heart and Vascular Care
- Hyperbaric Care
- Infectious Disease
- Level 1 Trauma Center
- Orthopedic Care
- Palliative Care
- Plastic Surgery and Micro-revascularization
- Primary Care
- Respiratory Care
- Weight Loss
- Women’s Health

Location

2000 Canal St.
 New Orleans, LA 70112
 504.702.3000
 umcno.org



Our unique history and growth

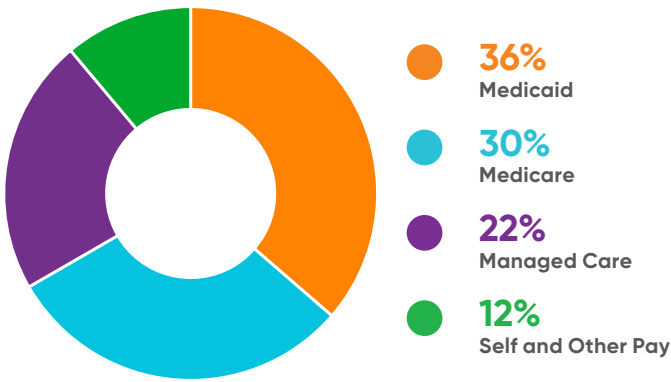
2013	2015	2021	2022	2023	2024
Interim LSU Hospital joined the LCMC Health system in June 2013 after a public-private partnership reached with the State of Louisiana.	University Medical Center New Orleans opened August 1, safely relocating 131 patients from Interim LSU Hospital to the new, state-of-the-art medical facility. 	 The Burn Center received American Burn Association verification, the Outpatient Surgery Center opened, and construction began on second parking garage. The new 1,365-space parking garage opened for hospital staff and the outpatient Behavioral Health Center opened at 2475 Canal St.	University Medical Center earns national accreditation as a Comprehensive Center for Bariatric Surgery and receives Geriatric Emergency Department accreditation. 	University Medical Center received Magnet Recognition from the American Nurses Credentialing Center (ANCC). This prestigious designation distinguishes organizations that meet rigorous standards for nursing excellence. 	Launch of Healthy Brain Aging Initiative, a program designed to address cognitive health in aging patients across three LCMC Health centers, expansion of Bariatric program, and inpatient bed capacity increase of 16%.

University Medical Center trains over 5,692 future healthcare providers every year

Learners by the numbers

- Medical residents and fellows1,203
- Nursing students3,070
- Medical students250
- Allied Health1,155
- Dental residents and fellows10
- Pharmacy residents4

Payer mix



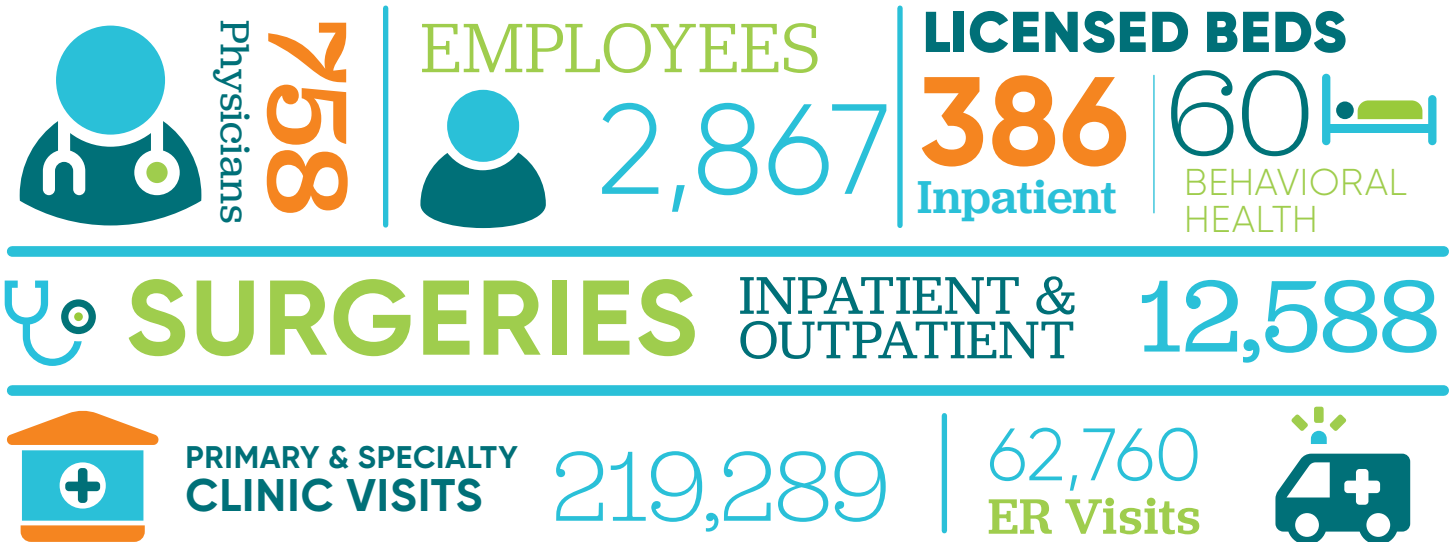
Awards, accreditations, and certifications

- The Joint Commission accredited
- American College of Surgeons-verified Level 1 Trauma Center
- Accredited Comprehensive Center for Bariatric Surgery
- American Burn Association-verified Burn Center
- Commission on Cancer Accredited Cancer Program
- Accredited Center of Comprehensive Care for Pulmonary Hypertension
- American Heart Association/American Stroke Association Certified Primary Stroke Center
- Get with the Guidelines® Target: Stroke Honor Roll Gold Plus
- The Joint Commission Certified Primary Stroke Program
- Magnet designation from the American Nurses Credentialing Center (ANCC)
- Most racially inclusive hospital in Louisiana, Lown Institute
- National Associate of Epilepsy Centers Level 3 Epilepsy Center

Academic affiliations include



University Medical Center by the numbers



Source: information based on 12 months ending December 31, 2024